

GehrTec[®] Backrail System

The quick and simple
installation system for
frameless large-area
modules

The installation system for very speedy fastening of frameless large-area modules using a rail system consisting of backrail and carrierrail.

Your advantage

Optimal economy

The GehrTec® Backrail System offers significant savings in time and cost when installing frameless large-area modules. The innovative rail system and the installation aids ensure ease of handling. Due to the integrated functions the system consists of few individual parts.

Long life cycle

Thanks to the high quality processing of all materials used the system is resistant to maximum wind and snow loads and, in conjunction with its high corrosion resistance, offers a long life cycle.

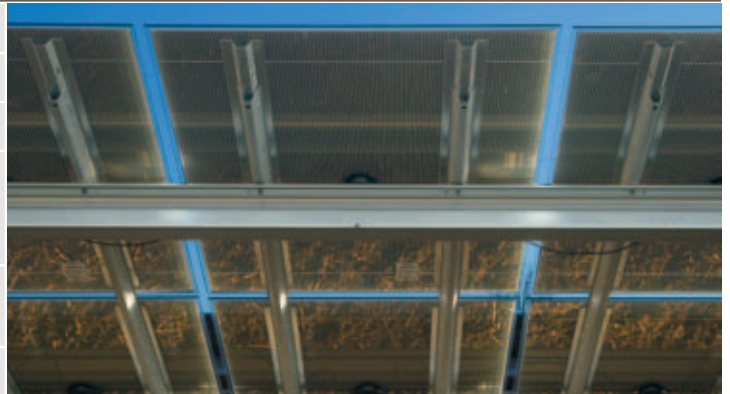
Highest quality and safety

All components used meet our high standards and are optimised by continual product innovations. A theft inhibiting function is integrated in the system.

GehrTec® Backrail

Technical data

Place of use	pitched roofs, ground mounted
Pitch	10-80°
Installation	manually or by robot
Solar modules	AMAT SunFab module 5.7 m ² (F-size) AMAT SunFab module 1.4 m ² (Q-size) other large-area laminates
Module dimensions	full-size: 2,200 x 2,600 mm quarter-size: 1,100 x 1,300 mm
Module orientation	vertical
Module fixing	Snap Backrails into place in the carrier
Load-bearing capacity	up to wind and snow load zone 3



Backrails are glued onto the reverse side of the modules and these are inserted into the carrierrails of the substructure. The Backrails are hooked into the Carrierrails with the aid of gravity.

We reserve the right to make changes

Gehrlicher Solar AG

Munich
Germany
Tel. +49 89 420792-0
info@gehrlicher.com

Coburg
Germany
Tel. +49 9568 89 6609-0
coburg@gehrlicher.com

Brazil (Salvador)
France (Paris)
Fuerteventura (Las Palmas)
Greece (Athens)

Great Britain (Birmingham)
India (Mumbai)
Italy (Milan)
Slovakia (Bratislava)

Spain (Madrid, Murcia)
South Africa (East London)
Czech Republic (Prague)
USA (Springfield)